

# Solibri Model Checker v7

## MODEL CHECKING FOR QUALITY

*We are excited and proud to introduce our latest version of Solibri Model Checker. Version 7 includes many enhancements based on customer requests, as well as new innovations from Solibri, Inc.*

### Process Performance

We are committed to continuous performance gains and delivering the most versatile capabilities for the Quality Assurance/Quality Control (QA/QC) process. This allows us to offer the minimum total cost of ownership for BIM analysis software while achieving the maximum speed of delivering consistent quality. If you just check part of the model or just one aspect, how can you tell the quality of the unchecked items? Our philosophy is that we check the entire building each time, the same way, allowing us to obtain objective checking results. Results can of course then be filtered - in many ways. Issues that are found need to be communicated, fixed and verified before we are done.

The total process performance has been improved in many areas:

- Streamlined user interface is even easier to use: This = a reduced learning curve (cost)
- New menu structures maximize the available working area: more content

is visible, especially on laptops

- Improved load times, less memory consumption, improved 3D performance: faster interaction
- Roles enable preselected rulesets, classifications and ITO's: fewer steps to take, clicks to make
- Rule dependencies: enable more focused and precise results
- Shared resources like rulesets, ITOs, report templates, classifications: always up-to-date standard practices implementing the enterprise level QA/QC process
- Locked rulesets: consistent results while no unintended changes to rule parameters
- Corporate level management/maintenance

### Usability, Ease of Use, New GUI

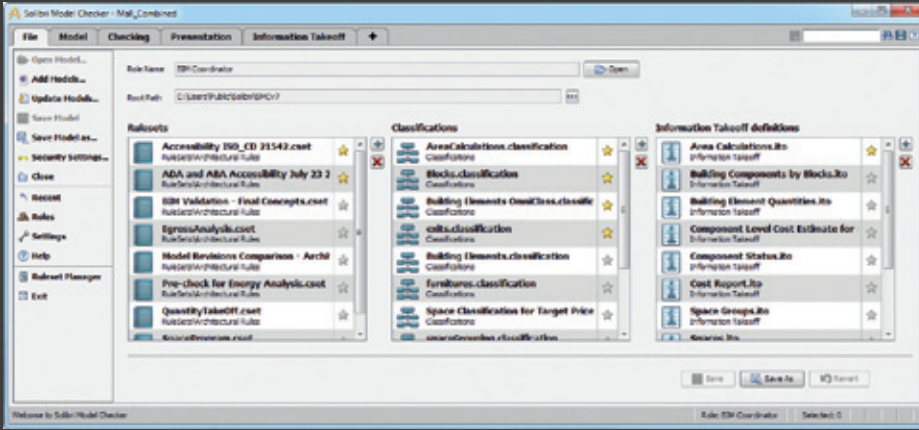
The user interface has been enhanced with a clearer menu structure, follow-

ing the look and feel of commonly used tools, without going to extremes, and more space for the actual work - models. Current users will find that everything is still there but it's even easier to use.

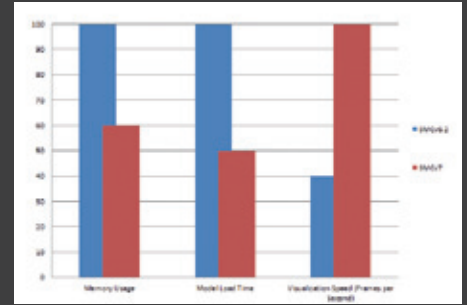
### Introducing Roles

Solibri Model Checker v7 comes with preset roles such as: Training, Architect, Building Code Checking, Energy Analysis, MEP, Structural, BIM Coordinator, QTO, Owner, and Admin. These can be modified and you may define as many new roles as you need.

The general idea is to have recommended rulesets, classifications to match, and ITO definitions for each role. This way it's easier to find what is needed and using Solibri Model Checker v7 is more efficient, providing just what is required to the end user. No more, no less. Further, you can set defaults (yellow stars) to be used each time you open a new model.



User Interface showing the use of Roles. Yellow stars indicate defaults to be used when opening a new model.



Solibri Model Checker v7 has a greatly improved performance. The improvement in memory usage, model load time and visualization speed in frames per second is noticeable. For Memory usage and model load time smaller value is better. For visualization speed a higher value is better.

## Support for Enterprise level QA/QC Practices and Processes

By providing tools for managing shared resources, such as QA/QC specific rulesets, rule parameters, ITO's and classifications, Solibri Model Checker v7 now better supports the organization-wide implementation of BIM QA/QC methods and best practices. Users can be assigned either the standard user profile or admin user profile. Design professionals can now follow their company's model checking practices.

User rights may also prevent individual standard users from modifying rulesets and parameters and potentially deviating from the company's desired practices.

Implementing the standard BIM QA/QC process is carried out by admin users. This also allows for a shared centralized repository of rulesets and classifications for effectively sharing, updating and managing company level Solibri installations, reducing IT costs. By default, Solibri Model Checker related files are saved locally on each user's computer. In version 7 it is possible to define centrally, with one configuration file, where different resources are located. For example, from which folders the user should look for rulesets, IFC models, ITO definitions and templates, etc. This configuration file is stored in a shared folder, and each Solibri Model Checker installation points to the same file. This simplifies the maintenance of Solibri Model Checker installations and eases distribution of company or project specific resources allowing each user the access to same files.

## Dramatically Improved Performance

BIM is becoming more and more widely adopted, and BIM has reached the maturity to suit even the biggest and most demanding projects. Solibri Model Checker v7 performance has been greatly enhanced, and the speed and accuracy Solibri provides to the application of BIM even on the largest projects:

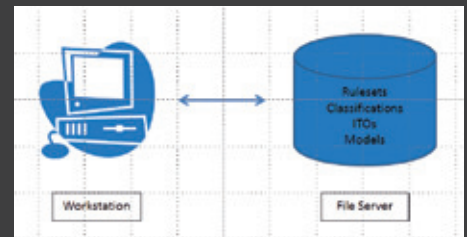
- Load time reduced up to 40% as compared to version 6.2
- Footprint reduced by 60% as compared to v6.2
- 3D Performance, especially frames per second, has been highly improved especially with large models

## Rule Dependencies, Interrelating Rules

This feature enables rules to depend on the results of another rule. A simple example is that when you are checking Accessibility you first have to check that your model has spaces classified. If this is not the case, then other rules will not produce any issues since the only issue is the proper space classification.

## New Rules

Lately we are seeing many BIM guides being developed. GSA BIM Guides in the US are continuously developing, Statsbygg is about to publish their BIM Manual in Norway, as well as the National BIM guides in Finland. These are



Solibri Model Checker v7 has enhanced support for enterprise level QA/QC process implementation. Rulesets, classifications and other Solibri Model Checker resources can now be managed more efficiently, and stored in a centralized repository for easy access and supporting an organization level best practices

now included as rulesets in SMC, with more to come.

We are working on many fronts in the area of Building Code Checking. Now we have rules for accessibility according ISO CD 21542, ADA, ABA, ICC and Finnish Standards. Egress rules have also been further enhanced.

These are some examples of the new rules and rulesets added to this version.